

**FOR  
SALE**

# 104-112 ERIE BLVD

SCHENECTADY, NEW YORK 12305

## 166 UNIT APPROVED DEVELOPMENT OPPORTUNITY



### **+/-4.08 ACRE APPROVED MULTI-FAMILY DEVELOPMENT**

CONSISTS OF 2 TAX LOTS ALONG ERIE BLVD & EDISON AVE

QUALIFIES FOR NYS OPPORTUNITY ZONE PROGRAM

ELIGIBLE HISTORIC PRESERVATION TAX CREDITS

APPROVALS IN PLACE FOR 166 UNITS SPANNING 4 BUILDINGS AND LARGE PARKING LOT

PLANS CONSIST OF 1-4 BEDROOM UNITS

HIGH END AMENITIES INCLUDING SWIMMING POOL, DOG PARK, FITNESS CENTER, CAFÉ,  
AND CO-WORKING SPACE

FIRST FLOOR TO INCLUDE RETAIL SUITES

OVERLOOKS GENERAL ELECTRIC OFFICE PARK

CLOSE PROXIMITY TO RIVERS CASINO AND OTHER MOHAWK HARBOR DEVELOPMENTS

SECONDS FROM STATE STREET WITH NUMEROUS DINING AND ENTERTAINMENT OPTIONS

CLOSE PROXIMITY TO UNION COLLEGE

**FOR MORE  
INFORMATION  
PLEASE  
CONTACT**

#### **RUDY R. LYNCH, CCIM**

NYS Licensed Associate Real Estate Broker  
(518) 337-3705 mobile  
Rudy@CarrowRealEstate.com

#### **KYLE J. BRADLEY, CPA**

NYS Licensed Real Estate Salesperson  
(845) 325-1568 mobile  
kbradley@CarrowRealEstate.com

**FOR SALE**

**\$3,024,000**

\$18,216 PER APPROVED UNIT



Adding Value Through Professional Real Estate Services

The information herein has not been verified, and is provided without warranty unless otherwise guaranteed in writing. Readers are advised to investigate and verify same prior to entering into a transaction.

**FOR  
SALE**

# 104-112 ERIE BLVD

## SCHENECTADY, NEW YORK 12305

### PROPERTY DETAILS

#### 104-108 Erie Blvd, 121 Edison Avenue- Tax ID: 39.79-1-2.1

- +/- 3.62 Acres
- 104 Erie Blvd (To Be Demolished)
  - 24,080 sf
  - Built 1920
  - Approved 5 story development with 110 Units
- 106 Erie Blvd
  - 9,333 sf
  - 1 Story (Existing structure to remain)
  - Built 1981
  - Approved for 3 Units
  - Plans include high end amenities such as fitness center, meeting room, café, co working space, rooftop pool and lounge
- 108 Erie Blvd
  - 21,432 sf
  - 4 Stories (Existing structure to remain)
  - Built 1980
  - Approved for 39 Units
- 121 Edison Avenue
  - 2.49 Acres
  - 228 Parking Spots



#### 112 Erie Blvd- Tax ID: 39.79-1-5.1

- +/- .46 Acres
- 23,144 sf
- 2 Stories (Existing structure to remain)
- Built 1960

**FOR MORE  
INFORMATION  
PLEASE  
CONTACT**

**RUDY R. LYNCH, CCIM**  
NYS Licensed Associate Real Estate Broker  
(518) 337-3705 mobile  
Rudy@CarrowRealEstate.com

**KYLE J. BRADLEY, CPA**  
NYS Licensed Real Estate Salesperson  
(845) 325-1568 mobile  
kbradley@CarrowRealEstate.com

**FOR SALE**

**\$3,024,000**

**\$18,216 PER UNIT**



**Adding Value Through Professional Real Estate Services**

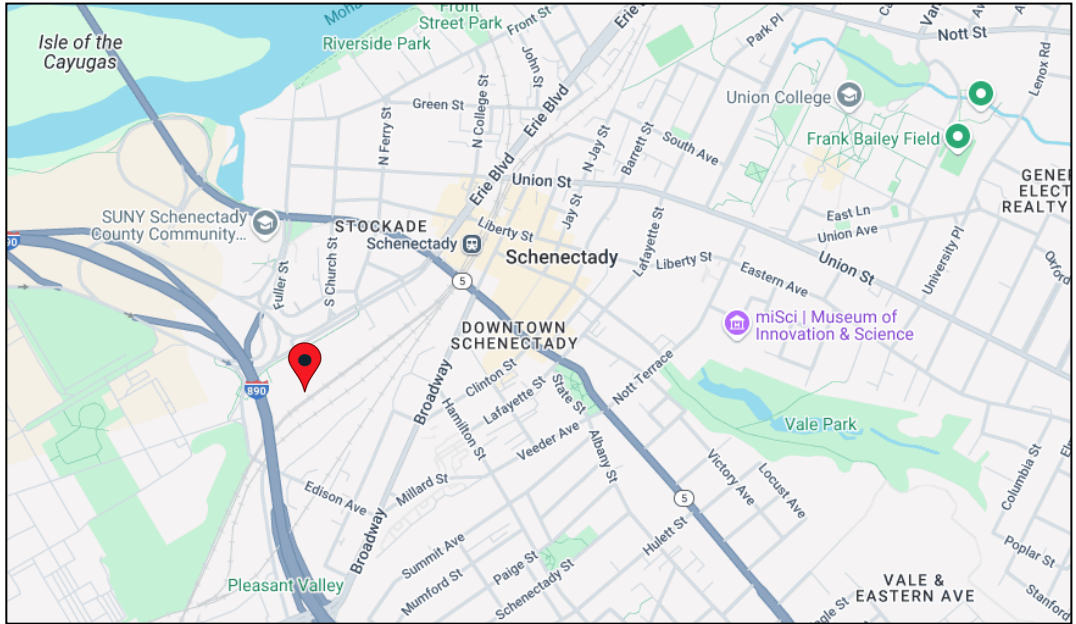
The information herein has not been verified, and is provided without warranty unless otherwise guaranteed in writing. Readers are advised to investigate and verify same prior to entering into a transaction.



**FOR  
SALE**

# 104-112 ERIE BLVD SCHENECTADY, NEW YORK 12305

**LOCATION**



**TAX MAP**



**FOR MORE  
INFORMATION  
PLEASE  
CONTACT**

**RUDY R. LYNCH, CCIM**  
NYS Licensed Associate Real Estate Broker  
(518) 337-3705 mobile  
Rudy@CarrowRealEstate.com



**Adding Value Through Professional Real Estate Services**

The information herein has not been verified, and is provided without warranty unless otherwise guaranteed in writing. Readers are advised to investigate and verify same prior to entering into a transaction.

**FOR  
SALE**

# 104-112 ERIE BLVD

SCHENECTADY, NEW YORK 12305

EXTERIOR  
PHOTOS



**FOR MORE  
INFORMATION  
PLEASE  
CONTACT**

**RUDY R. LYNCH, CCIM**  
NYS Licensed Associate Real Estate Broker  
(518) 337-3705 mobile  
Rudy@CarrowRealEstate.com

**KYLE J. BRADLEY, CPA**  
NYS Licensed Real Estate Salesperson  
(845) 325-1568 mobile  
kbradley@CarrowRealEstate.com



Adding Value Through Professional Real Estate Services

The information herein has not been verified, and is provided without warranty unless otherwise guaranteed in writing. Readers are advised to investigate and verify same prior to entering into a transaction.



**FOR  
SALE**

# 104-112 ERIE BLVD

SCHENECTADY, NEW YORK 12305

INTERIOR  
PHOTOS



**FOR MORE  
INFORMATION  
PLEASE  
CONTACT**

**RUDY R. LYNCH, CCIM**  
NYS Licensed Associate Real Estate Broker  
(518) 337-3705 mobile  
Rudy@CarrowRealEstate.com

**KYLE J. BRADLEY, CPA**  
NYS Licensed Real Estate Salesperson  
(845) 325-1568 mobile  
kbradley@CarrowRealEstate.com



Adding Value Through Professional Real Estate Services

The information herein has not been verified, and is provided without warranty unless otherwise guaranteed in writing. Readers are advised to investigate and verify same prior to entering into a transaction.

**FOR  
SALE**

# 104-112 ERIE BLVD

SCHENECTADY, NEW YORK 12305

INTERIOR  
PHOTOS



**FOR MORE  
INFORMATION  
PLEASE  
CONTACT**

**RUDY R. LYNCH, CCIM**  
NYS Licensed Associate Real Estate Broker  
(518) 337-3705 mobile  
Rudy@CarrowRealEstate.com

**KYLE J. BRADLEY, CPA**  
NYS Licensed Real Estate Salesperson  
(845) 325-1568 mobile  
kbradley@CarrowRealEstate.com



Adding Value Through Professional Real Estate Services

The information herein has not been verified, and is provided without warranty unless otherwise guaranteed in writing. Readers are advised to investigate and verify same prior to entering into a transaction.

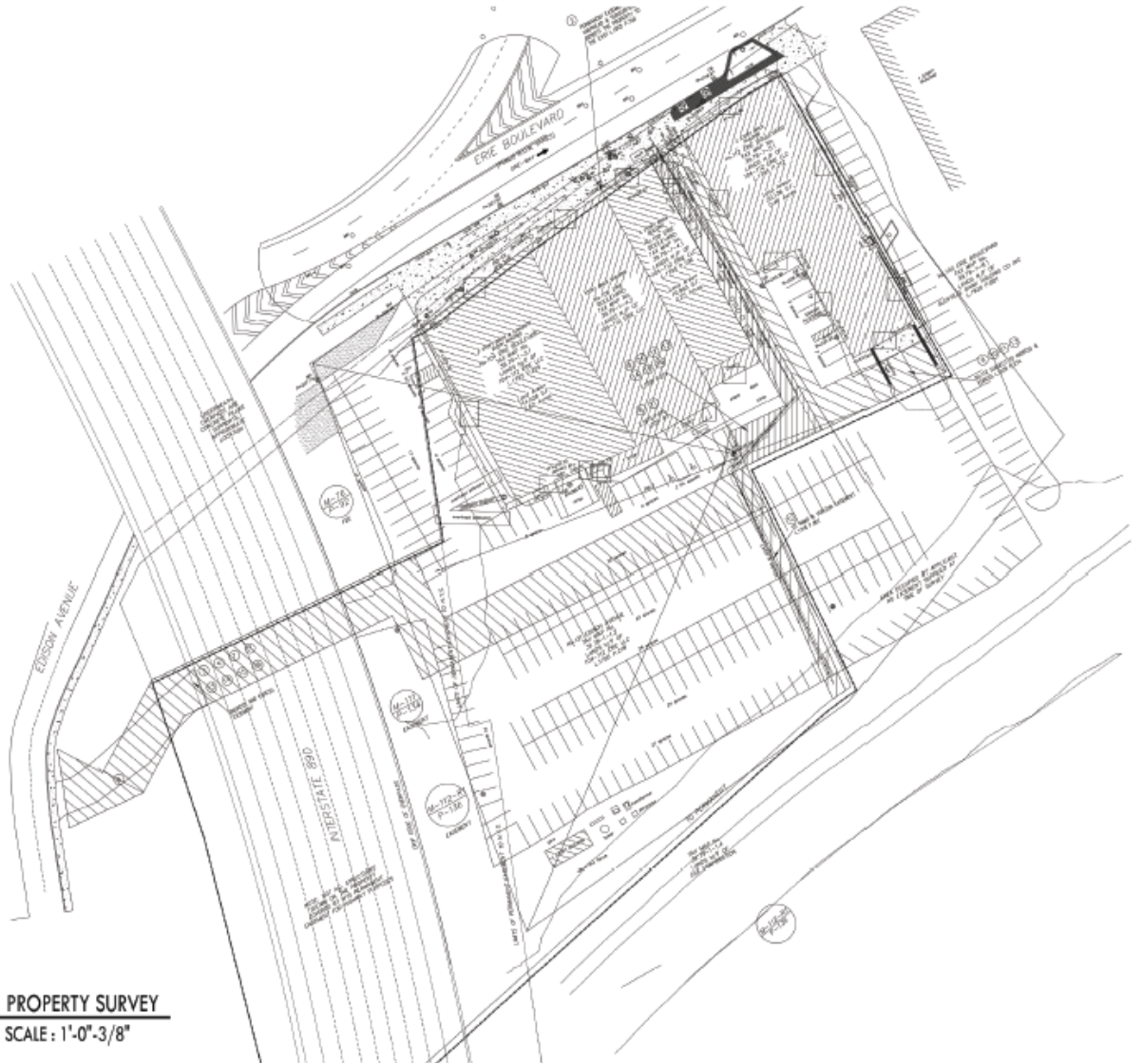


**FOR  
SALE**

# 104-112 ERIE BLVD

SCHENECTADY, NEW YORK 12305

SURVEY



**FOR MORE  
INFORMATION  
PLEASE  
CONTACT**

**RUDY R. LYNCH, CCIM**  
NYS Licensed Associate Real Estate Broker  
(518) 337-3705 mobile  
Rudy@CarrowRealEstate.com

**KYLE J. BRADLEY, CPA**  
NYS Licensed Real Estate Salesperson  
(845) 325-1568 mobile  
kbradley@CarrowRealEstate.com



Adding Value Through Professional Real Estate Services

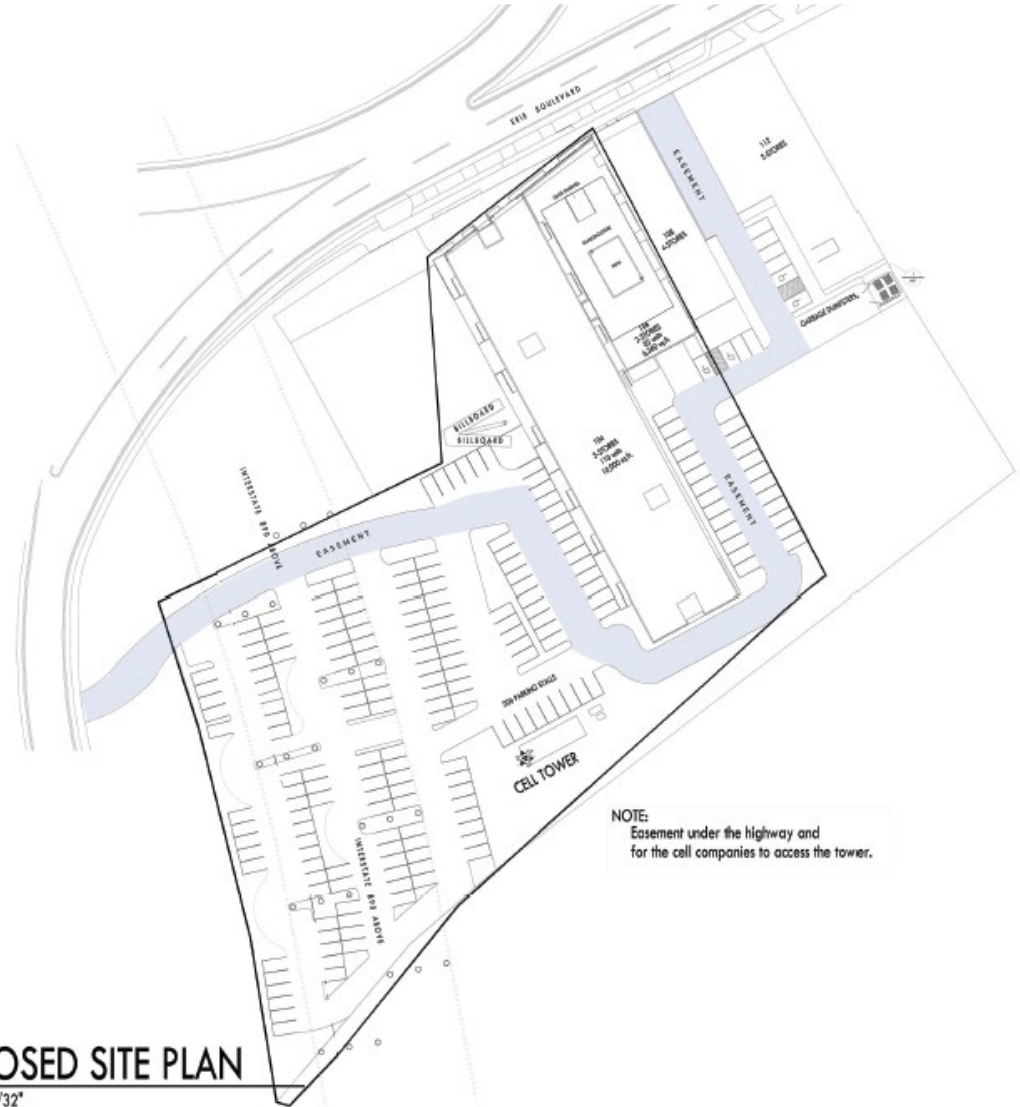
The information herein has not been verified, and is provided without warranty unless otherwise guaranteed in writing. Readers are advised to investigate and verify same prior to entering into a transaction.

**FOR  
SALE**

# 104-112 ERIE BLVD

SCHENECTADY, NEW YORK 12305

SITE PLAN



**FOR MORE  
INFORMATION  
PLEASE  
CONTACT**

**RUDY R. LYNCH, CCIM**  
NYS Licensed Associate Real Estate Broker  
(518) 337-3705 mobile  
Rudy@CarrowRealEstate.com

**KYLE J. BRADLEY, CPA**  
NYS Licensed Real Estate Salesperson  
(845) 325-1568 mobile  
kbradley@CarrowRealEstate.com



Adding Value Through Professional Real Estate Services

The information herein has not been verified, and is provided without warranty unless otherwise guaranteed in writing. Readers are advised to investigate and verify same prior to entering into a transaction.



**FOR  
SALE**

# 104-112 ERIE BLVD

SCHENECTADY, NEW YORK 12305

PROPOSED  
FLOOR PLANS



PROPOSED FOURTH FLOOR



PROPOSED FIRST FLOOR



PROPOSED FIFTH FLOOR



PROPOSED THIRD FLOOR



PROPOSED SECOND FLOOR

## 104 ERIE - PROPOSED FLOOR PLANS

FOR MORE  
INFORMATION  
PLEASE  
CONTACT

**RUDY R. LYNCH, CCIM**  
NYS Licensed Associate Real Estate Broker  
(518) 337-3705 mobile  
Rudy@CarrowRealEstate.com

**KYLE J. BRADLEY, CPA**  
NYS Licensed Real Estate Salesperson  
(845) 325-1568 mobile  
kbradley@CarrowRealEstate.com



Adding Value Through Professional Real Estate Services

The information herein has not been verified, and is provided without warranty unless otherwise guaranteed in writing. Readers are advised to investigate and verify same prior to entering into a transaction.

**FOR  
SALE**

# 104-112 ERIE BLVD

SCHENECTADY, NEW YORK 12305

PROPOSED EXT  
ELEVATIONS



PROPOSED NORTH ELEVATION



PROPOSED SOUTH ELEVATION



PROPOSED EAST ELEVATION



PROPOSED WEST ELEVATION

## 104 ERIE - PROPOSED EXTERIOR ELEVATIONS

FOR MORE  
INFORMATION  
PLEASE  
CONTACT

**RUDY R. LYNCH, CCIM**  
NYS Licensed Associate Real Estate Broker  
(518) 337-3705 mobile  
Rudy@CarrowRealEstate.com

**KYLE J. BRADLEY, CPA**  
NYS Licensed Real Estate Salesperson  
(845) 325-1568 mobile  
kbradley@CarrowRealEstate.com



Adding Value Through Professional Real Estate Services

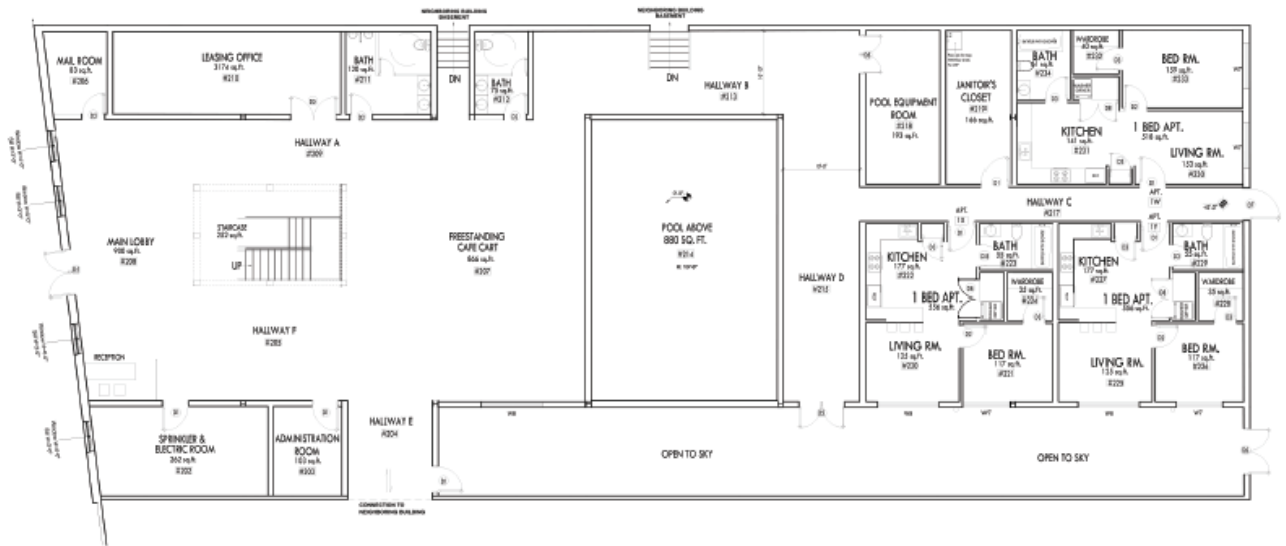
The information herein has not been verified, and is provided without warranty unless otherwise guaranteed in writing. Readers are advised to investigate and verify same prior to entering into a transaction.



**FOR  
SALE**

# 104-112 ERIE BLVD SCHENECTADY, NEW YORK 12305

PROPOSED 1ST  
FLOOR PLAN



**PROPOSED FIRST FLOOR PLAN-106**  
A2.12 SCALE: 1'-0"-3/16"



**FOR MORE  
INFORMATION  
PLEASE  
CONTACT**

**RUDY R. LYNCH, CCIM**  
NYS Licensed Associate Real Estate Broker  
(518) 337-3705 mobile  
Rudy@CarrowRealEstate.com

**KYLE J. BRADLEY, CPA**  
NYS Licensed Real Estate Salesperson  
(845) 325-1568 mobile  
kbradley@CarrowRealEstate.com



Adding Value Through Professional Real Estate Services

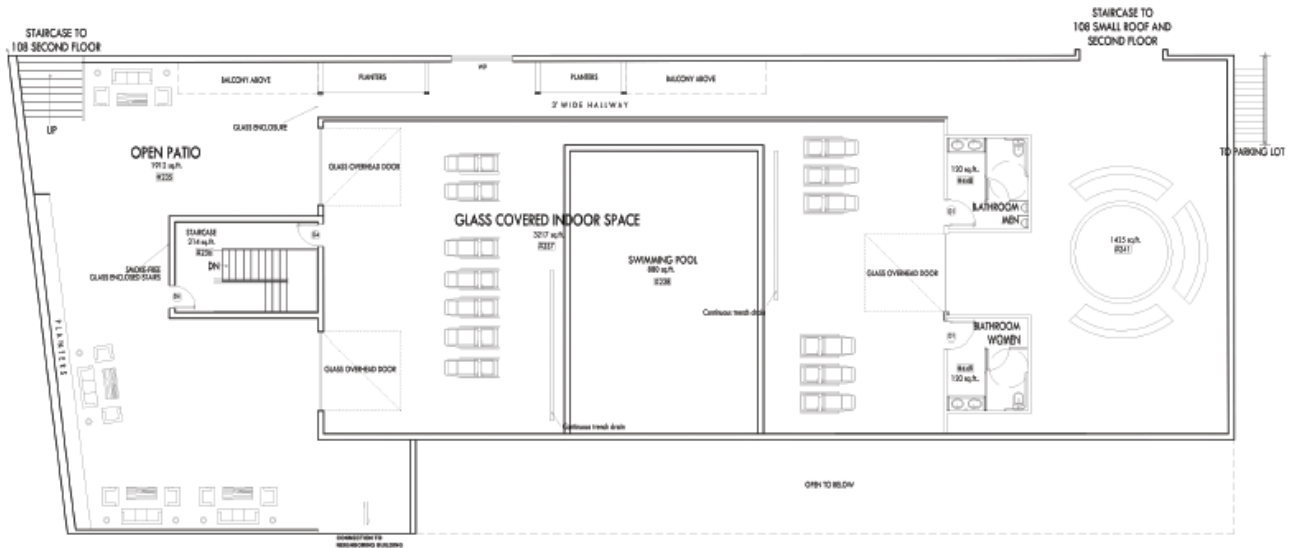
The information herein has not been verified, and is provided without warranty unless otherwise guaranteed in writing. Readers are advised to investigate and verify same prior to entering into a transaction.

**FOR  
SALE**

# 104-112 ERIE BLVD

SCHENECTADY, NEW YORK 12305

PROPOSED 2ND  
FLOOR PLAN



**PROPOSED SECOND FLOOR PLAN-106**

A2.13

SCALE : 1'-0"-3/16"



**FOR MORE  
INFORMATION  
PLEASE  
CONTACT**

**RUDY R. LYNCH, CCIM**  
NYS Licensed Associate Real Estate Broker  
(518) 337-3705 mobile  
Rudy@CarrowRealEstate.com

**KYLE J. BRADLEY, CPA**  
NYS Licensed Real Estate Salesperson  
(845) 325-1568 mobile  
kbradley@CarrowRealEstate.com



Adding Value Through Professional Real Estate Services

The information herein has not been verified, and is provided without warranty unless otherwise guaranteed in writing. Readers are advised to investigate and verify same prior to entering into a transaction.

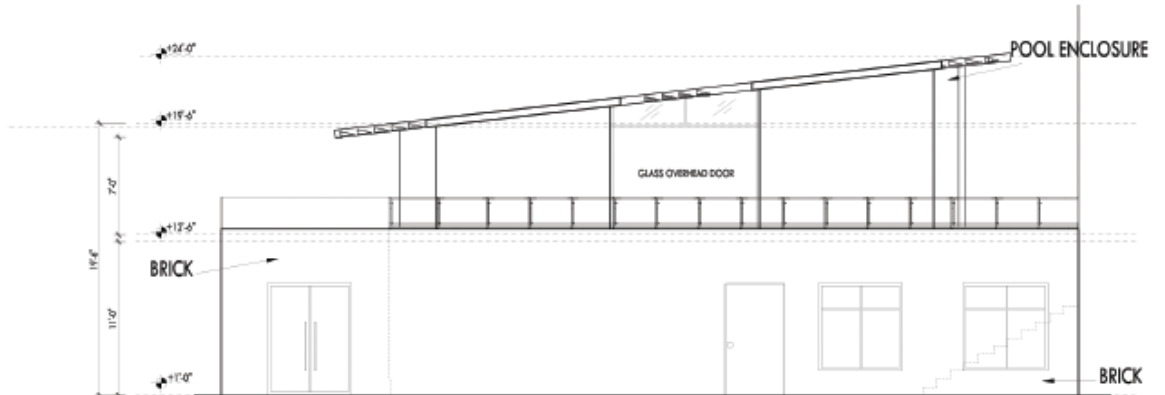


**FOR  
SALE**

# 104-112 ERIE BLVD

SCHENECTADY, NEW YORK 12305

PROPOSED  
ELEVATIONS

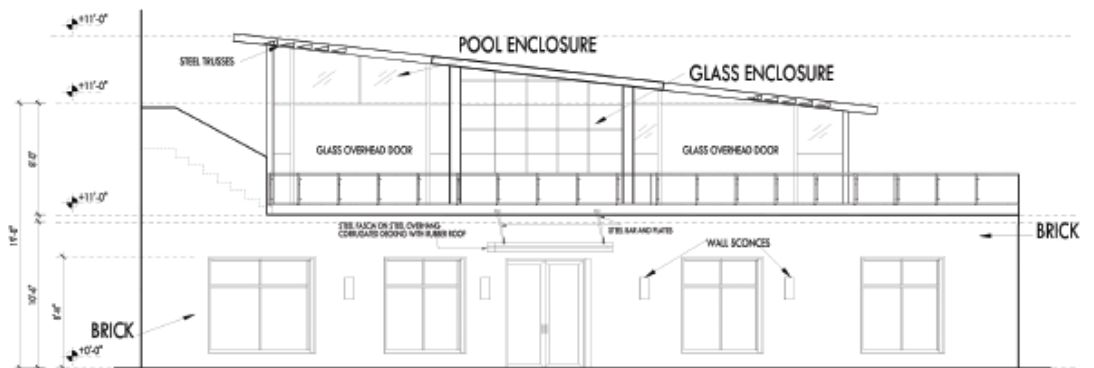


A

PROPOSED NORTH ELEVATION-106

A2.14

SCALE: 1'-0"-1/4"



B

PROPOSED SOUTH ELEVATION-106

A2.14

SCALE: 1'-0"-1/4"

FOR MORE  
INFORMATION  
PLEASE  
CONTACT

**RUDY R. LYNCH, CCIM**  
NYS Licensed Associate Real Estate Broker  
(518) 337-3705 mobile  
Rudy@CarrowRealEstate.com

**KYLE J. BRADLEY, CPA**  
NYS Licensed Real Estate Salesperson  
(845) 325-1568 mobile  
kbradley@CarrowRealEstate.com



Adding Value Through Professional Real Estate Services

The information herein has not been verified, and is provided without warranty unless otherwise guaranteed in writing. Readers are advised to investigate and verify same prior to entering into a transaction.