

**FOR
LEASE**

16 NORTH PLAZA

16 N GREENBUSH ROAD
TROY, NY

CLASS A PROFESSIONAL OFFICE



+/- 3,500 SF OF CLASS A PROFESSIONAL OFFICE SPACE

TURNKEY MODERN OFFICE

OPEN FLOORPLAN LAYOUT

DIRECTLY ACROSS FROM HUDSON VALLEY COMMUNITY COLLEGE

SURROUNDED BY NUMEROUS DINING & SHOPPING AMENITIES

EASY ACCESS TO I-90

BRAND NEW BUILDING, CONSTRUCTED IN 2018

AMPLE ON-SITE PARKING

IDEAL FOR BOTH PROFESSIONAL OFFICE AND MEDICAL USERS

PROFESSIONAL PROPERTY MANAGEMENT

FOR MORE
INFORMATION
PLEASE
CONTACT

RUDY R. LYNCH, CCIM

NYS Licensed Associate Real Estate Broker
(518) 337-3705 mobile
Rudy@CarrowRealEstate.com

KYLE J. BRADLEY, CPA

NYS Licensed Real Estate Salesperson
(845) 325-1568 mobile
kbradley@CarrowRealEstate.com

AVAILABLE FOR LEASE

\$16.50 PSF

**MODIFIED GROSS PLUS UTILITIES
DAILY JANITORIAL INCLUDED**



Adding Value Through Professional Real Estate Services

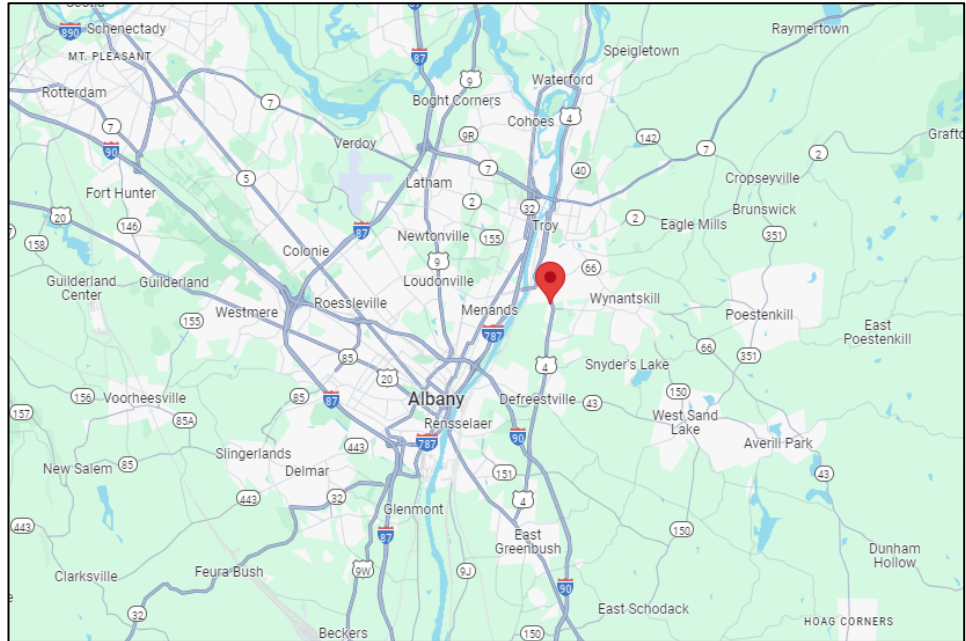
the information herein has not been verified, and is provided without warranty unless otherwise guaranteed in writing. readers are advised to investigate and verify same prior to entering into a transaction.

**FOR
LEASE**

16 NORTH PLAZA

16 N GREENBUSH ROAD
TROY, NY

LOCATION



FOR MORE
INFORMATION
PLEASE
CONTACT

RUDY R. LYNCH, CCIM
NYS Licensed Associate Real Estate Broker
(518) 337-3705 mobile
Rudy@CarrowRealEstate.com

KYLE J. BRADLEY, CPA
NYS Licensed Real Estate Salesperson
(845) 325-1568 mobile
kbradley@CarrowRealEstate.com



Adding Value Through Professional Real Estate Services

the information herein has not been verified, and is provided without warranty unless otherwise guaranteed in writing. readers are advised to investigate and verify same prior to entering into a transaction.

**FOR
LEASE**

16 NORTH PLAZA

16 N GREENBUSH ROAD
TROY, NY

EXTERIOR



FOR MORE
INFORMATION
PLEASE
CONTACT

RUDY R. LYNCH, CCIM
NYS Licensed Associate Real Estate Broker
(518) 337-3705 mobile
Rudy@CarrowRealEstate.com

KYLE J. BRADLEY, CPA
NYS Licensed Real Estate Salesperson
(845) 325-1568 mobile
kbradley@CarrowRealEstate.com



Adding Value Through Professional Real Estate Services

the information herein has not been verified, and is provided without warranty unless otherwise guaranteed in writing. readers are advised to investigate and verify same prior to entering into a transaction.

**FOR
LEASE**

16 NORTH PLAZA

16 N GREENBUSH ROAD
TROY, NY

INTERIOR



FOR MORE
INFORMATION
PLEASE
CONTACT

RUDY R. LYNCH, CCIM
NYS Licensed Associate Real Estate Broker
(518) 337-3705 mobile
Rudy@CarrowRealEstate.com

KYLE J. BRADLEY, CPA
NYS Licensed Real Estate Salesperson
(845) 325-1568 mobile
kbradley@CarrowRealEstate.com



Adding Value Through Professional Real Estate Services

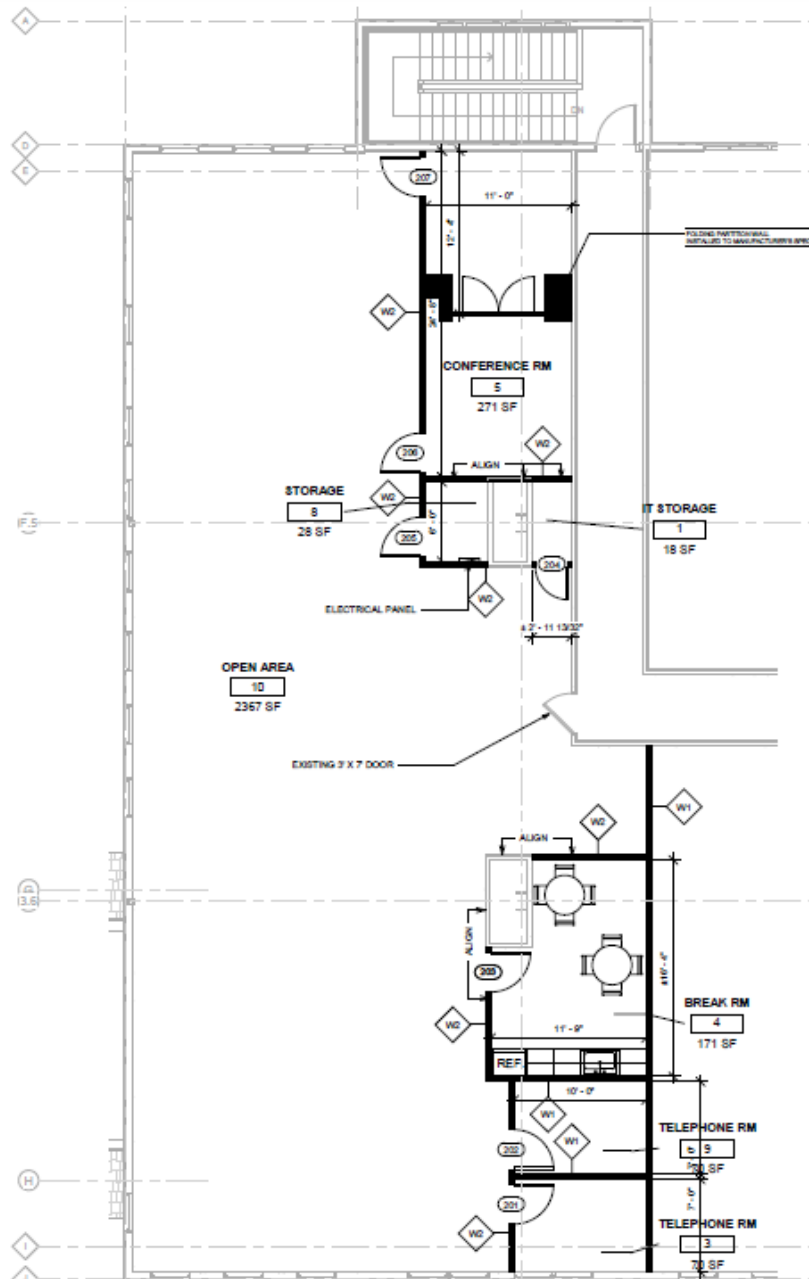
the information herein has not been verified, and is provided without warranty unless otherwise guaranteed in writing. readers are advised to investigate and verify same prior to entering into a transaction.

**FOR
LEASE**

16 NORTH PLAZA

16 N GREENBUSH ROAD
TROY, NY

FLOORPLAN



FOR MORE
INFORMATION
PLEASE
CONTACT

RUDY R. LYNCH, CCIM
NYS Licensed Associate Real Estate Broker
(518) 337-3705 mobile
Rudy@CarrowRealEstate.com

KYLE J. BRADLEY, CPA
NYS Licensed Real Estate Salesperson
(845) 325-1568 mobile
kbradley@CarrowRealEstate.com



Adding Value Through Professional Real Estate Services

the information herein has not been verified, and is provided without warranty unless otherwise guaranteed in writing. readers are advised to investigate and verify same prior to entering into a transaction.

**FOR
LEASE**

16 NORTH PLAZA

16 N GREENBUSH ROAD
TROY, NY

AMENITIES



FOR MORE
INFORMATION
PLEASE
CONTACT

RUDY R. LYNCH, CCIM
NYS Licensed Associate Real Estate Broker
(518) 337-3705 mobile
Rudy@CarrowRealEstate.com

KYLE J. BRADLEY, CPA
NYS Licensed Real Estate Salesperson
(845) 325-1568 mobile
kbradley@CarrowRealEstate.com



Adding Value Through Professional Real Estate Services

the information herein has not been verified, and is provided without warranty unless otherwise guaranteed in writing. readers are advised to investigate and verify same prior to entering into a transaction.